

TURBO LOGIX

CENTRIFUGAL COMPRESSOR CONTROLLER

TURBOLOGIX SPECIFICATIONS

Built to last

- ◆ High quality, industrial grade Allen-Bradley controller
- ◆ 48" X 30" X 12" NEMA 4/12 carbon steel enclosure
- ◆ Construction to UL508A Standards

Built to perform

- ◆ 10.5" industrial grade touchscreen display with Ethernet based communications
- ◆ 2 channels of 4-20 milliamp analog outputs
- ◆ 16 channels of 4-20 milliamp analog inputs
- ◆ 16 channels of 120 vac digital outputs
- ◆ 16 channels of 120 vac digital inputs



Built to protect

- ◆ Ambient temperature and pressure compensating surge control
- ◆ Motor amperage limit control
- ◆ Segregated PID tuning constants for motor current and pressure control
- ◆ Modulate and Auto-dual pressure control
- ◆ Flashcard backup of all software and data

Built for your needs

- ◆ Sophisticated Logix platform allows for easy expansion to address special user requirements, making TurboLogix the ideal controller for custom system applications



1.800.637.5729 • WWW.AIRRELIEF.COM

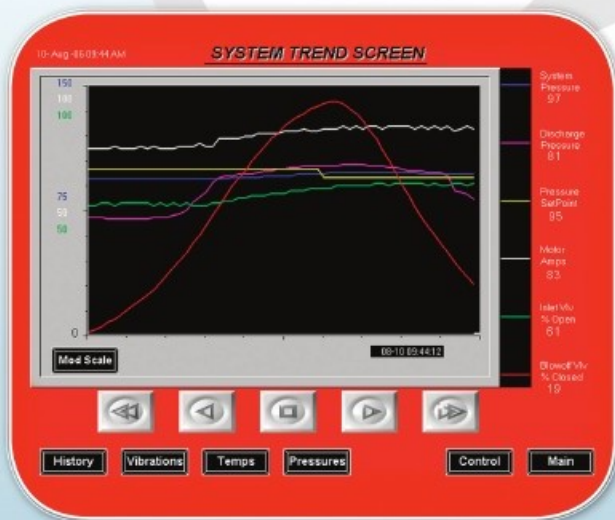
AIR RELIEF
A Gardner Denver Product

THE NEXT GENERATION OF CONTROL



TurboLogix Basic Features

- ◆ Next Generation Allen-Bradley CompactLogix Programmable Automation Controller
- ◆ High Performance 10.5" Color Touchscreen Operator Interface, 32K colors, 800 X 600 pixels, Ethernet based communications
- ◆ Operator interface offers 4X more viewing area than competition's standard offering
- ◆ Flexible hardware and software to adapt to any machine
- ◆ Multiple language support
- ◆ UL508A Construction
- ◆ Industrial rated components
- ◆ Customizable graphics based operator interface to simplify user's set up and operation of machine
- ◆ Capability for remote data viewing and machine control via a telephone modem
- ◆ Supports Modbus and a variety of communication protocols
- ◆ Temperature and pressure compensated PID valve control
- ◆ Minimum and maximum motor amp control



- ◆ Event log for up to 500 events
- ◆ Fully configurable compressor and motor information page
- ◆ Multiple hour meters and compressor statistics
- ◆ Processor and battery status indication
- ◆ User memo area
- ◆ "Last Surge" data capture buffer
- ◆ Custom digital and analog input setup and monitoring
- ◆ Two minute (short term) and six month (historic) data trending for all analog data
- ◆ Three-level password protection of all setup, protection and control settings
- ◆ Real time clock and calendar
- ◆ Compact flash card backup of all software and data
- ◆ Load-sharing capable
- ◆ Transient voltage surge suppressor for power protection
- ◆ Fused analog inputs to prevent hardware damage
- ◆ Main power circuit breaker

1.800.637.5729
www.airrelief.com

32 East Powell Road • Mayfield, KY 42066

AIR RELIEF
A Gardner Denver Product